

EMPOWERING

Lives

RESTORING

Rights

UPHOLDING

Dignity



We are...

Good Shepherd Services (GSS) is a not-for-profit organisation registered under the Companies Commission of Malaysia (SSM). In 2015, tax-exempt status was granted. In Malaysia, its origins as a charity were founded and operated by the Good Shepherd Sisters in 1956, a worldwide congregation which has its presence in 73 countries.

We believe that each and every person is of value. We are steadfast in our commitment to reaching out with compassion and respect to motivate each person to fulfil their full potential. Through the years our focus has grown and evolved, as we reach out to those who are marginalised, especially women, girls and their families, and restore in them their self-worth and dignity.

As we continue our tradition of empowering lives, restoring rights, and upholding the dignity of women and children who are experiencing sexual and gender-based violence, we have diversified from crisis shelters to services that are more inclusive to include hostels for girls, projects on improving livelihoods and mental health, and programmes that place emphasis on the importance of embracing discomfort in these conversations as we promote equity and inclusion.

VISION

One person is of more value
than the whole world

MISSION

We are committed to reaching out with
compassion and respect, empowering
each person to wholeness and full
potential

CORE VALUES

Compassion
Gratitude
Respect
Integrity
Zeal

OUR GOALS



GENDER EQUALITY



POVERTY REDUCTION

- We recognise that gender equality and poverty reduction necessitate personal and communal action and conversion.
- We work to address the unequal power relations and discriminatory social norms and practises experienced by women and girls.
- We aim to remove barriers, create opportunities and increase access to economic opportunities for women.
- We commit to empower all through the promotion of gender equality and poverty reduction.

“Advancing gender equality and poverty reduction is central to Good Shepherd's stance of upholding the dignity of persons and inculcating a culture of justice and peace.”

OUR PRIORITIES



Women

- Preventing Gender-based Violence
- Empowerment of Women
- Leadership and Sustainable Livelihoods

Children

- Safety and Protection of Children
- Access to Education
- Mental Health and Well-being



Youths

- Rural-Urban Migration
- Urban Poverty
- Mental Health and Well-being

Communities

- Food Security
- Collective Leadership and Resilience
- Green Economy



OUR WORK

SERVICES

From remote parts of Sabah, addressing challenges like accessibility and high attrition rates. Our Service Centres offer support for women, children, youths, and families, providing interim accommodation, food aid, academic support, capacity-building, case management, and counselling.

Through the Good Shepherd Education Fund we provide financial assistance and academic support to children.

- Asrama Desa Pukak, Kiulu
- Asrama Komuniti Tulid, Keningau
- Community Service Centre, Ipoh
- Youth-PREP Centre, Kota Kinabalu
- Program Van Sekolah, Keningau & Kiulu
- Pusat Jagaan Seri Murni, Kota Kinabalu
- Good Shepherd Education Fund in Sabah & Perak

PROJECTS

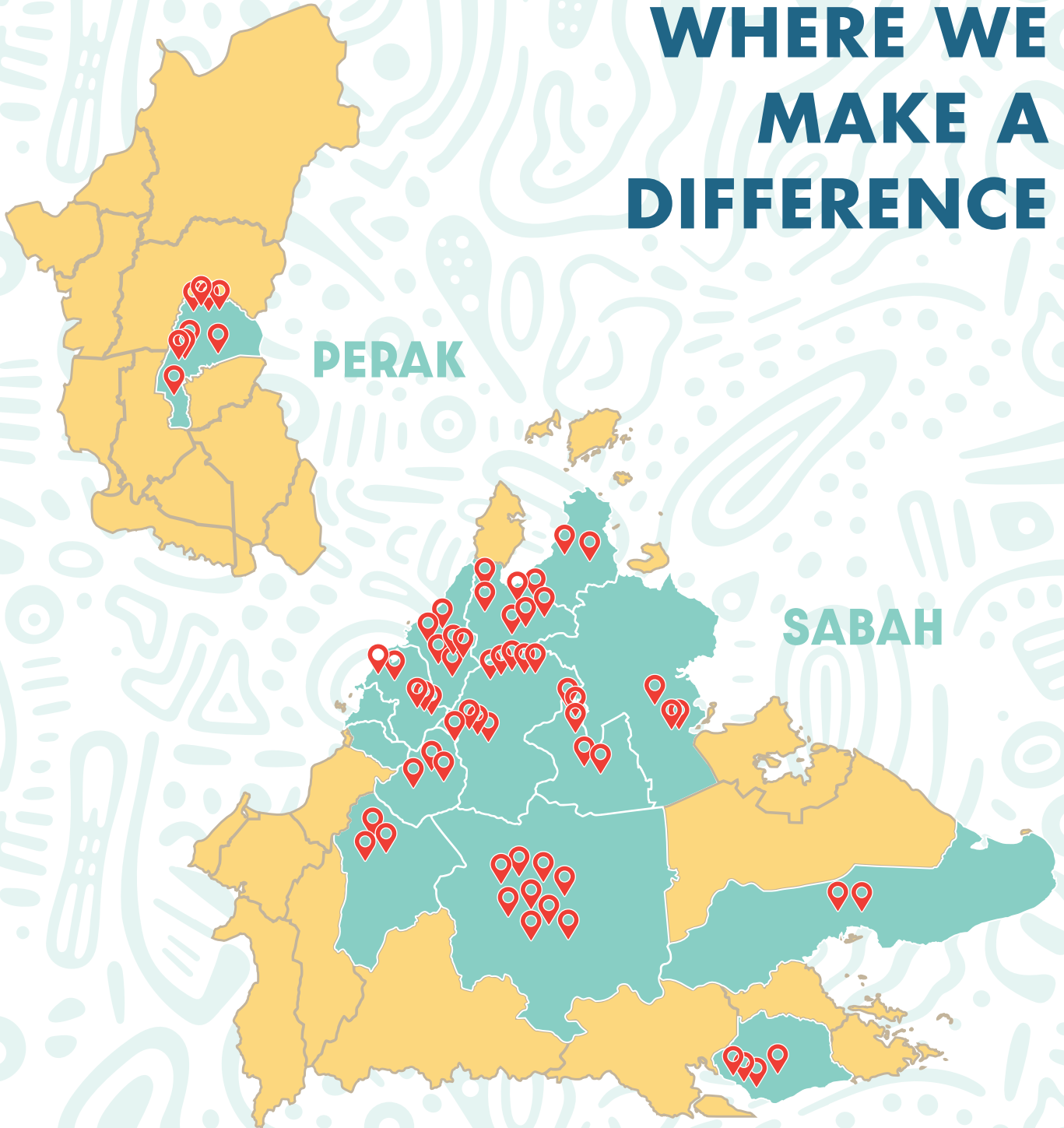
Our community projects empower women and youths in both rural and urban areas to improve their livelihoods, aiming to foster economic independence and enhance family income, thereby improving their quality of life. We also prioritise reshaping attitudes toward gender equality and combating sexual and gender-based violence (SGBV) against women and children within our programmes.

- Everything Tambunan, Tambunan
- Everything Pineapple, Kiau Nuluh
- Collective Leadership and Community Livelihood, Keningau & Tongod
- Green Economy, Keningau & Tongod
- Academic Support, Youth Empowerment and Women Livelihood, Kiulu
- Mental Health & Well-being, Kota Kinabalu & Ipoh

PROGRAMMES

All of our awareness programmes and campaigns are based on United Nations platforms. These include events like International Women's Day, International Day of the Girl Child, International Day of Education, Orange The World, and International Youth Day. These initiatives unite the global community in collective efforts in achieving the Sustainable Development Goals.

WHERE WE MAKE A DIFFERENCE



WHAT CAN I DO?

*Work with us!
Together, we can shape a better future.*

DONATE

Support us through our services, projects or programmes. All donations are tax exempted. Individual or corporate donations goes a long way towards the communities whom we serve.

VOLUNTEER

Volunteering allows you to reconnect with your community and make it a better place. Even helping out with the smallest task can make a real difference!

PARTNERSHIP

We work with our partners to find innovative solutions for a better tomorrow. Partnerships form powerful synergies that lead to lasting impacts.

EXPERTISE

Contribute your time to help grow and strengthen knowledge and skills. Capacity-building is a core focus of our work towards building community resilience.



EMPOWERING *Lives* | RESTORING *Rights* | UPHOLDING *Dignity*



SABAH

 +60 88 - 652 410

IPOH

 +60 17 - 900 6232

PUSAT JAGAAN SERI MURNI

 +60 19 - 534 9044

YOUTH-PREP CENTRE

 +60 14 - 8660 224

 info@goodshepherd.my

 www.goodshepherd.my

 [@goodshepherdservices](https://www.facebook.com/goodshepherdservices)

 [@gssmalaysia](https://www.instagram.com/gssmalaysia)